



BOLD LIVING

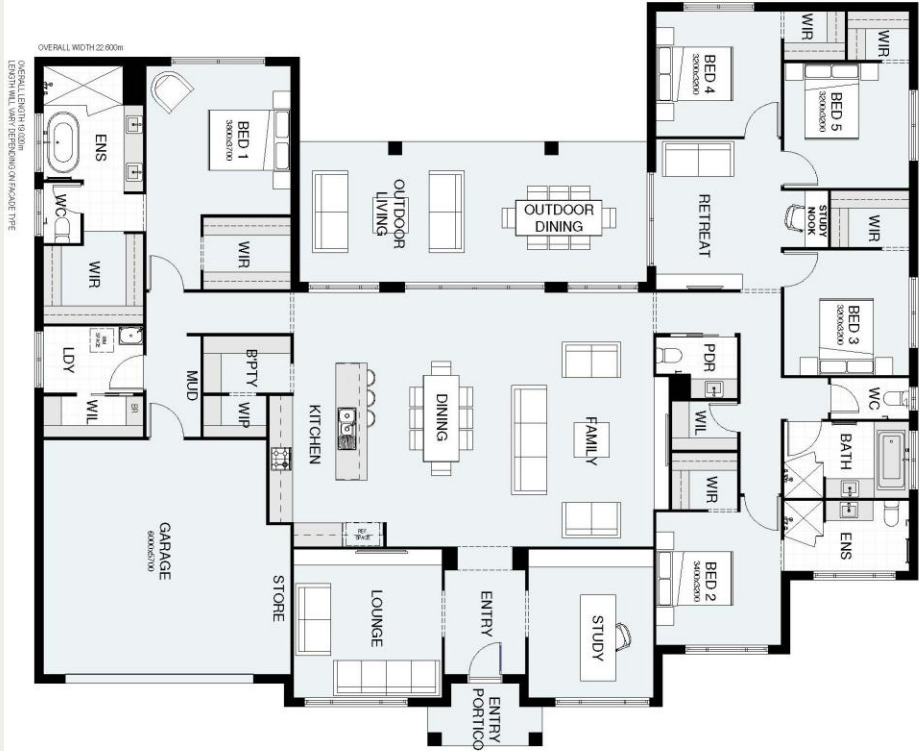
HOUSE ONLY

BALWYN 350

PARKLAKE ADARE

\$594,000

House Size: 350.2 m²



SMART LIVING INCLUSIONS

- Southampton façade upgrade
- Rendered Hebel Exterior
- M Slab/Piers/Site Allowances
- HSTP system
- 5000L Water Tank
- 2590mm Ceiling Height
- Floor Coverings Throughout Interior
- LED Downlights Throughout
- 20mm Caesarstone Benchtops
- 60cm Electric Appliances
- Dishwasher
- Driveway Allowance (50m²)
- Concrete & Tiles to Outdoor Living
- Letterbox & Clothesline
- Ceiling Fans
- 7 Star Energy Rating

SMART PROMO: IT'S YOUR CHOICE!

OPTION 1:

- Roller Blinds to All Windows
- Insect Screens to Windows and Doors
- Side by Side Fridge
- Front Load Washer
- Dryer
- 65" TV (With Wall Bracket)
- Two-burner BBQ (with Trolley)
- \$5,000 Evolve Studio Gift card

OPTION 2:

- \$20,000 Evolve Studio Gift Card

Rosie Illing
0432 672 703

r.illing@boldliving.com.au



create your dream

