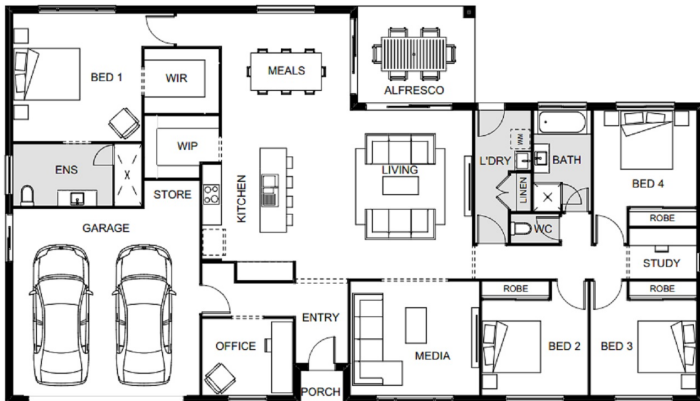




## Floor Plan:



### LOT #112

Parklake Estate

Address: Howell Circuit, Adare, 4343



4039 m<sup>2</sup>

## Beechmont 245 - EDEN - Harmony

Package Price From

4 2 2 244 m<sup>2</sup>

**\$705,960\***

### About package:

At Hallmark Homes, we're all about giving you more home for your money, without sacrificing quality. More design features. More style. More space. That's why thousands of families in South East Queensland have trusted us to build their new homes.

#### PACKAGE INCLUSIONS:

- Seaside Facade Included
- T2 Treated Frames & Trusses
- "H1" Soil Classification
- Council Fee Allowance
- Colorbond Steel Roof with 60mm Anticon Blanket
- N3 Tiedown
- Floor Coverings Throughout
- Flyscreens
- Re-Constituted Stone Benchtops Throughout
- Overhead Cabinetry to Kitchen
- 600mm Ilve Appliances
- Concrete Driveway & Porch Allowance
- 7-star Energy Rating
- NBN Ready
- Luxury Upgrade Package Included
- 2 x Split System Air-Conditioning Units
- LED Lighting Throughout and Ceiling Fans
- HSTP System with connections
- 5,000L Water Tank

## ENQUIRE NOW:

Dylan Stumer • P: 0488 158 581 • E: [dylan.s@hallmarkhomes.com.au](mailto:dylan.s@hallmarkhomes.com.au)

Homes

This is a proposed House and Land package subject to the separate purchase of the land. It has not yet been constructed. All site costs are subject to final approval by Hallmark Homes Pty Ltd head office. This House and Land package is indicative only and is subject to land availability and land registration of the proposed lot. Contact Agent for full details. Images are indicative and for illustration purposes only. Refer to [www.hallmarkhomes.com.au/prices](http://www.hallmarkhomes.com.au/prices) to view the full list of standard inclusions. Any items not specified on inclusion list and/or colour selections and/or plans are not included in this price. Price shown does not include additional amounts payable in respect of variations to the house design requested by the Buyer. Plan is subject to approval by the Developer (if required) and Local Authorities and may need to be altered to comply with estate covenants. QBCC license number: 23846.